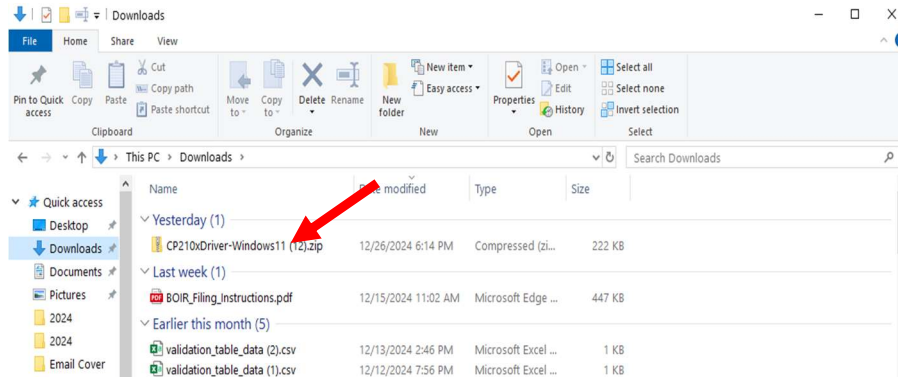
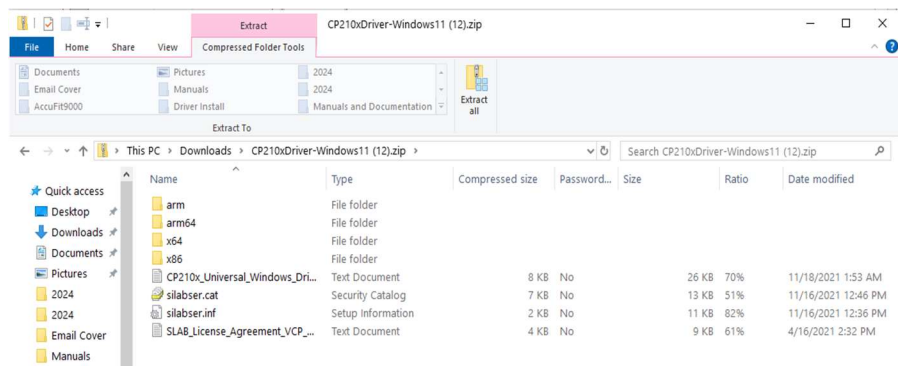


## Installing the CP210x Driver for USB Communication in Windows™ 11

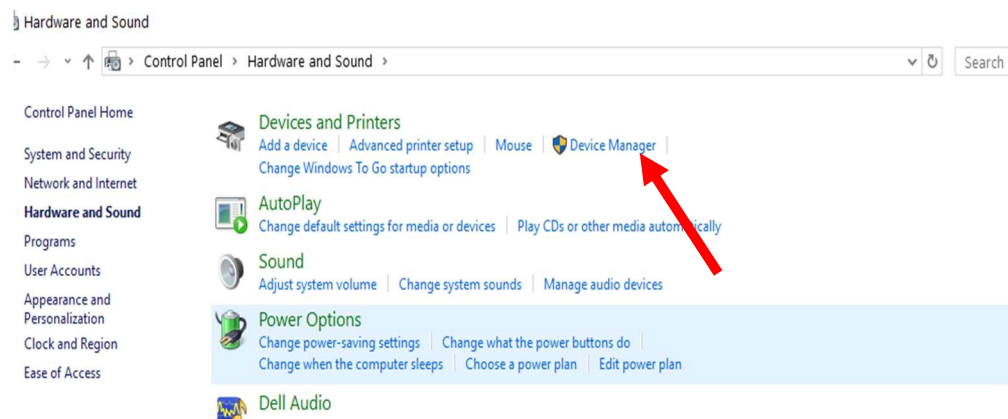
1. Download the driver from <https://accutec.com/download/accutfit-9000cp210x-driver/> or select the CP210x (Windows 11) on thumb drive supplied with system.



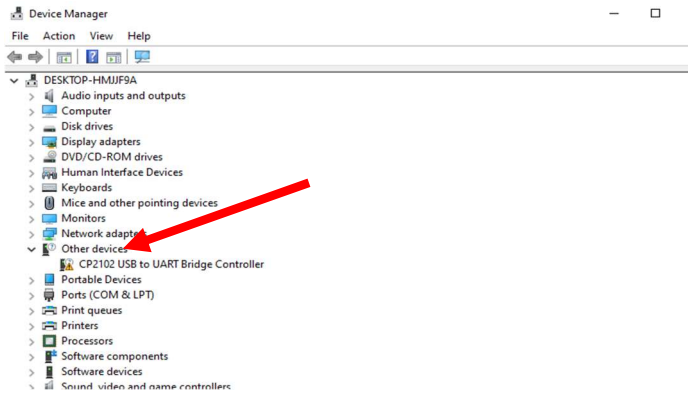
2. Click on the downloaded file to extract zip file in your Downloads folder (if downloaded) or directly on the thumb drive.



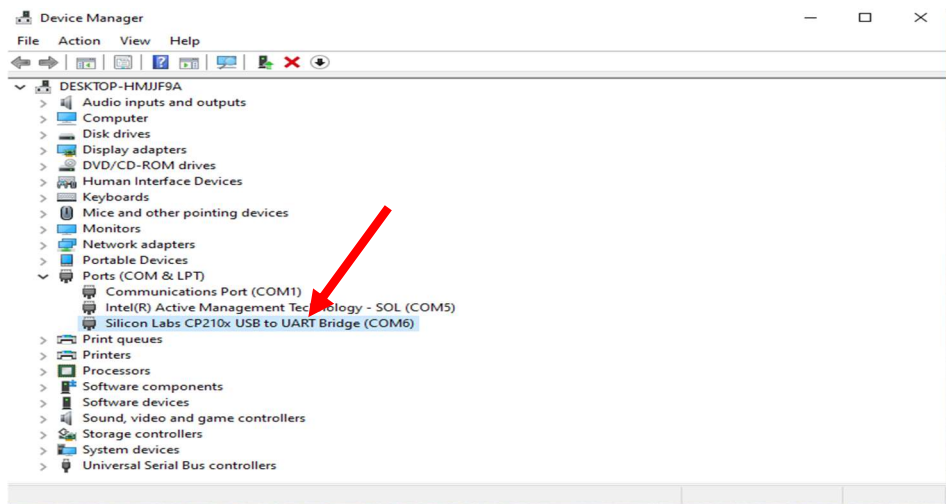
3. Using the USB cable provided, insert the “B” connector into the AccuFIT 9000 or 9000 PRO device and the “A” connector into the computer. Power on the device.
4. On the computer, open up Device Manager by searching for it in the Start Menu “Search” field or through Control Panel by clicking “Hardware and Sound”



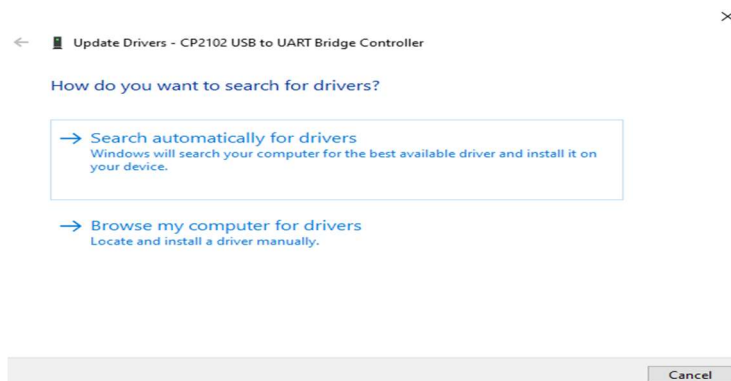
5. Navigate to "Other Devices" and expand it



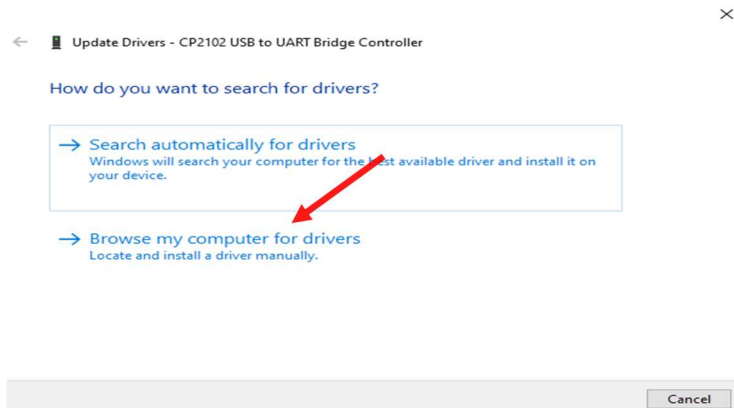
6. You will see an item labeled "CP2102...." with a warning triangle on the icon (not shown in this example)
7. If you do not see "Other Devices", navigate to "Ports (Com & LPT)" and look for CP210x driver with port assignment. If there is no warning triangle, the driver is already installed.



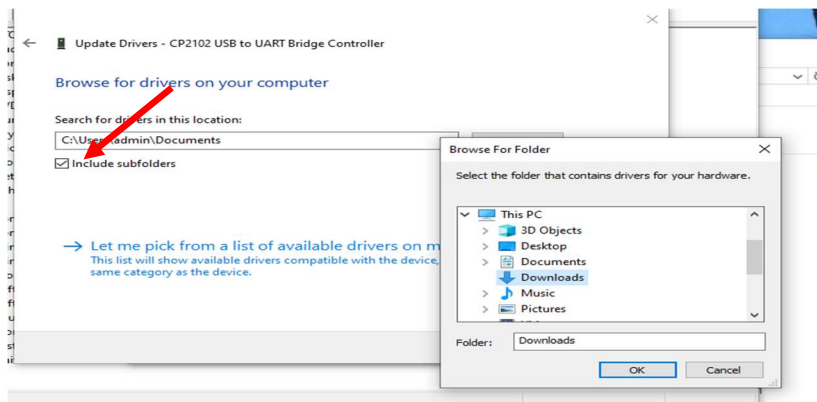
8. If you do see the warning triangle, right click that item and select "Update driver" from the context menu.



9. Select "Browse my computer for drivers"



10. Tap the browse button and make sure that the "Include Subfolders" checkbox is selected. Using the pop-up window, navigate to your downloads folder or thumb drive.



11. Click "OK" and then "Next".

12. You should see a success message; click "Close".

13. In the Device manager list, the device will no longer appear in "Other Devices" and should now appear with a different name under "Ports (COM and LPT)" as shown on previous page.